



Springlands Wind Farm Update

What's been happening at Springlands Wind Farm?

RATCH-Australia Corporation (RAC) is continuing to assess the suitability of the properties directly to the east of Collinsville to host the proposed Springlands Wind Farm with up to 120 wind turbines.

A key factor to inform the suitability of the land

for the proposed wind farm is the measurement of the local wind speeds. To supplement the ongoing assessment using the currently deployed ground-level wind monitoring devices, we are now progressing with the installation of meteorological masts (met masts).

RAC received development approval in May 2023 to install up to five met masts. We plan to install two masts this year. The additional met masts may be installed in the coming years.

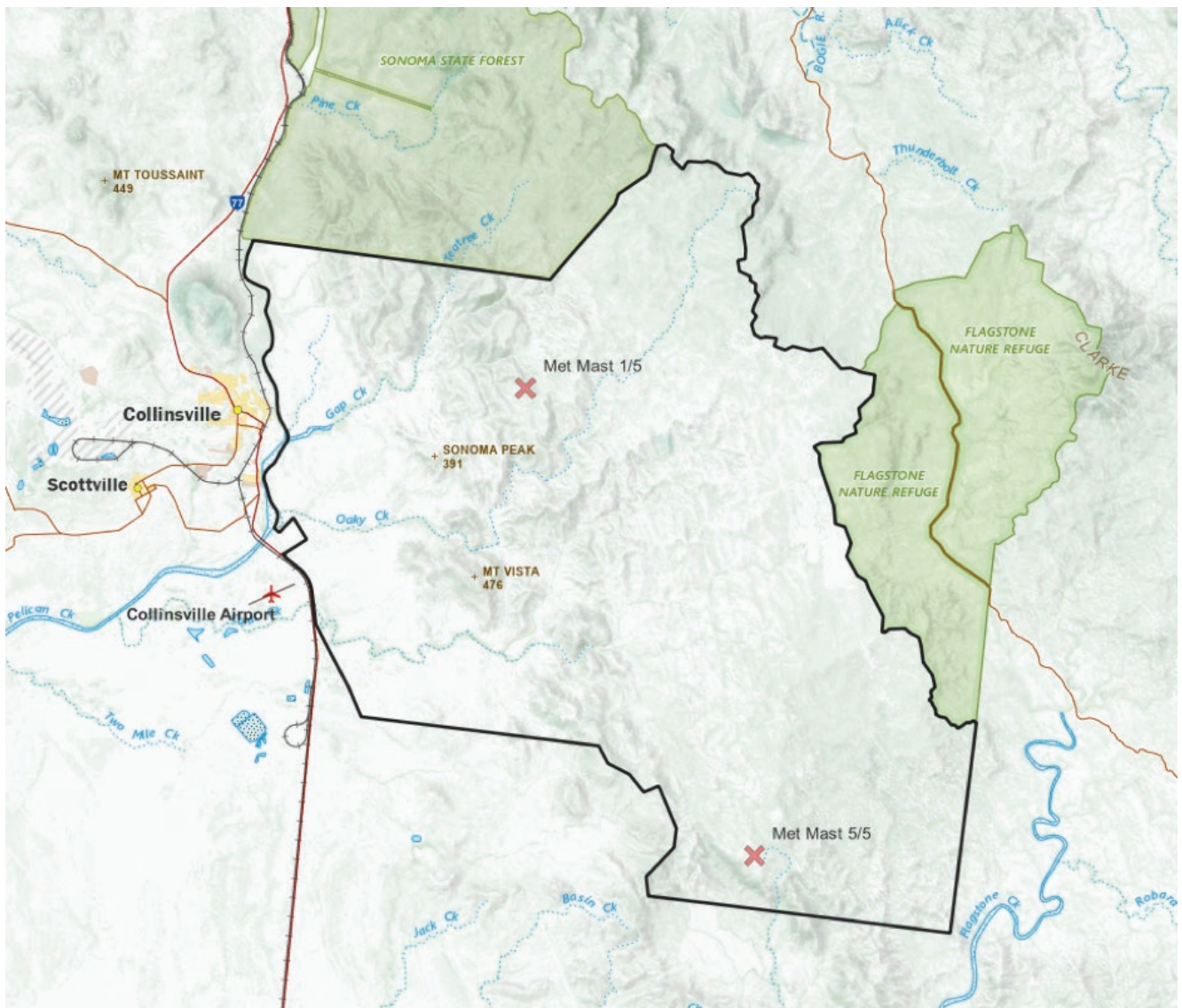
Upcoming Work

With the completion of preparatory works in July, the delivery and installation of the masts will be undertaken from late September 2023 weather permitting.

Due to the complexities in accessing the specific mast locations, the installation contractor will be using helicopters to safely transport the installation crew, and deliver and install met mast components.

Under the current schedule, this work will be undertaken between Monday 25th September and Monday 2nd October 2023, with all operations between the hours of 8am and 5pm in accordance with the planning approval. No work or flights will be undertaken on Sundays.

During this period, approximately 12 helicopter round trips could occur each day from a laydown area near Collinsville Airport.



When installation is complete, the team will travel to the mast locations using all-terrain land vehicles to finish all commissioning and testing activities.

The map shows the two met mast locations within the site, #1/5 and #5/5 marked by red crosses, relative to the location of the helicopter operations base near Collinsville Airport.

The 140m high met masts have several anemometers and other instruments at various heights which will accurately measure the local wind speeds on the site. The locations of the met masts have been chosen to maximise the extent and value of the data collection with minimal ground disturbance.

(For more information about the met masts see the March 2023 newsletter available on:

<https://ratchaustralia.com/springlands>).

In parallel to this work, specialist ecologists and archaeologists are continuing with detailed flora, fauna and heritage assessments of the area proposed for the wind farm. These assessments will continue throughout 2023 and 2024. As part of the development application process, RAC will be sharing the outcomes of these assessments with the community.



Springlands Campdraft Success

Congratulations to the community and organisers on the success of the second Annual Springlands Campdraft held recently at the Bowen River Campdraft ground.

This year's event was as fun and successful as usual, drawing a record number of spectators and participants and raising over \$12,000 for the charity Ronald McDonald House.

A special congratulations also to Jason Wanstall, winner of the RAC's sponsored Novice Draft.

Have your say

There are a number of ways you can provide feedback to help us finalise our development design and plans, including:

- request a one-on-one meeting with the project team as an interested party
- provide feedback via our 24-hour contacts at 1800 280 013 or via email at enquiries@ratchaustralia.com

To ensure everyone has the opportunity to share their views, RAC also plan to host more information sessions to help finalise our proposal for the Springlands Wind Farm.

In addition to the above avenues for feedback, there will be a formal process of public notification and consultation as part of the State and Federal development assessment processes for the project.

For more information

For more information on this project, check out Springlands Wind Farm website – www.ratchaustralia.com/springlands



Contact us

A dedicated email address and a 24-hour phone line have been established to allow local people to contact the project team. Any enquiries should be directed to the details below.

Email: enquiries@ratchaustralia.com
Phone 24hr contact 1800 280 013
Springlands Wind Farm
RATCH-Australia Corporation
Level 7, 111 Pacific Highway
North Sydney NSW 2060

