

# Springlands Wind Farm Update



## What's been happening at Springlands Wind Farm?

Since we held the Open House days in November 2022, RATCH-Australia has continued to assess the suitability of the properties directly to the east of Collinsville to host the proposed Springlands Wind Farm with approximately 120 wind turbines. Experienced ecologists were engaged to undertake extensive flora and fauna assessments of the area proposed for the wind farm in late 2022 with work ongoing throughout 2023. Over the coming months we will also carry out studies to assess potential visual and noise effects arising from the proposed wind farm on the surrounding areas. The outcome of these assessments will be shared with the community for review and further discussion in due course.

A key factor to inform the suitability of the land for a wind farm is the measurement of the local wind speeds. We have already undertaken

extensive assessment using sonics detectors called SODARs, which have been on the site since 2019. We are now proposing to supplement these with physical measurement by meteorological masts (met masts), which consist of narrow (approximately half a meter wide) steel lattice structures supported by guy wires. The masts are expected to be 140m high and will have several anemometers and other instruments installed at various heights to accurately measure the local wind speeds on the site. The proposed locations of the met masts have been chosen to maximise the extent and value of the data collection whilst ensuring that minimal vegetation clearing is required.

RATCH-Australia is planning to install up to five met masts in total, depending on the extent and quality of wind data collected. The first two met masts are planned to be erected mid this year and a third to potentially follow towards the end of the year.

email: [enquiries@ratchaustralia.com](mailto:enquiries@ratchaustralia.com)  
Phone: 24hr contact 1800 280 013  
Springlands Wind Farm  
RATCH-Australia Corporation  
Level 7, 111 Pacific Highway  
North Sydney NSW 2060

## Springlands Wind Farm

.....

## What does a met mast looks like?

The photos below show what a met mast looks like. We had this met mast installed at our Collector Wind Farm in NSW

.....





## What happens next?

Under the local planning system RATCH-Australia is required to obtain a development approval to install the met masts from the Whitsunday Regional Council (WRC).

A planning application package for all five proposed masts, with detailed information on the equipment, its installation and potential environmental impact has been submitted to WRC and is available for review on the council's planning website.

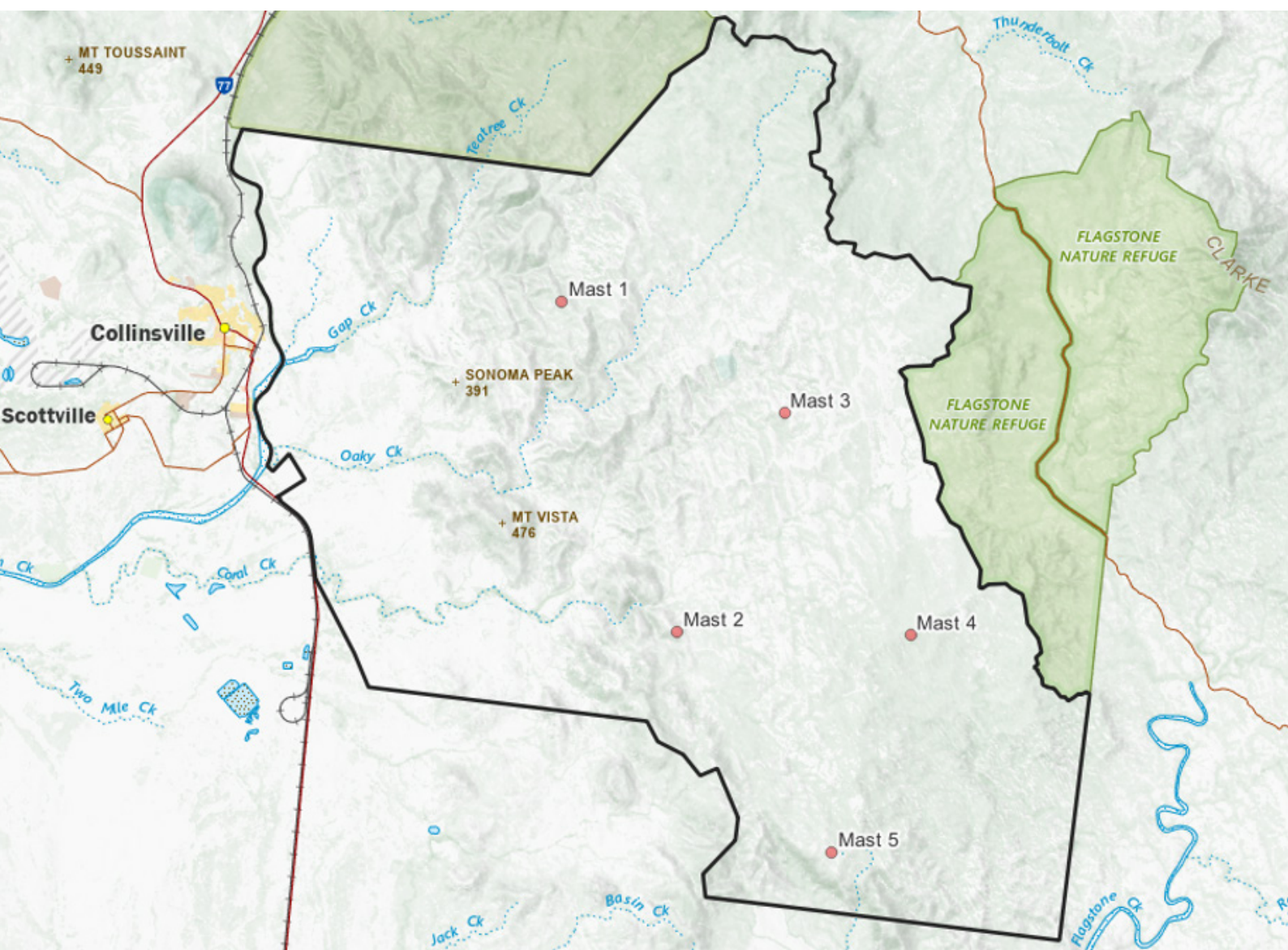
The map below shows the five proposed locations of the met masts, marked with red dots, defined in the development application.

## Steps to access the submission are as follows:

From <https://www.whitsundayrc.qld.gov.au/>, access the sections:

- Economic Development, Business and Planning
- Building and Development
- Planning

From there, there is a section called "Track my DA" where an application can be searched. The reference number for this application is "**20230143**".



# What opportunities are there for community input into this proposal?

In addition to the information in this newsletter, there will be a formal process of public notification as part of the development application process for the met masts.

This will consist of the posting of a printed notice at the site entries (on Parada Road and on Bowen Development Road) together with a notice in a regional newspaper. This formal notification is just a summary of the information in this newsletter, with the same links to the application on the WRC website.

In parallel with the works described, we are continuing to develop the proposed Springlands

wind farm project, and there are a number of ways that you can obtain further information on progress and get involved in the development process, including:

- reading our community newsletters, such as this one, throughout the development phase;
- request a one-on-one meetings with the project team as an interested party ;
- providing feedback via our 24-hour contacts at **1800 280 013** or via email at **[enquiries@ratchaustralia.com](mailto:enquiries@ratchaustralia.com)**
- check out Springlands Wind Farm website – [www.ratchaustralia.com/springlands](http://www.ratchaustralia.com/springlands)

Additionally, RATCH-Australia will host more Open House sessions throughout the development of Springlands Wind Farm to ensure everyone has the opportunity to share their views and feedback on the design and development process.



## Contact us

A dedicated email address and a 24-hour phone line have been established to allow local people to contact the project team.

Any enquiries should be directed to the details below.

Email: [enquiries@ratchaustralia.com](mailto:enquiries@ratchaustralia.com)  
Phone 24hr contact 1800 280 013  
Springlands Wind Farm  
RATCH-Australia Corporation  
Level 7, 111 Pacific Highway  
North Sydney NSW 2060

## Springlands Wind Farm