

# Springlands Wind Farm Update



## Welcome to the first edition of the RATCH-Australia's Springlands Wind Farm newsletter.

RATCH-Australia is currently assessing the potential for development of a large scale wind farm, the proposed Springlands Wind Farm, on private properties to the east of Collinsville township, just south of the Sonoma State Forest. You may already know RATCH-Australia as we own and operate the Collinsville Solar Farm,

located on the site of the old Collinsville Power Station, which has been operating very successfully since 2019. The 180,000 solar photovoltaic panels have a generation capacity of 42.5 megawatts (MW) and supply enough electricity to power the equivalent of 15,000 homes annually. RATCH-Australia is a leading independent power producer in Australia with a portfolio of power generation assets – gas, solar and wind – located in 5 States around the country, totalling in excess of 1.2GW generating capacity.

email: [enquiries@ratchaustralia.com](mailto:enquiries@ratchaustralia.com)  
Phone: 24hr contact 1800 280 013  
Springlands Wind Farm  
RATCH-Australia Corporation  
Level 7, 111 Pacific Highway  
North Sydney NSW 2060

## Springlands Wind Farm

# The Project

RATCH-Australia is assessing the potential for establishing a wind farm of up to 120 wind turbines within the Springlands wind farm site. Initial studies have indicated that wind speeds across the hills are suitable for harnessing this renewable energy source and that there is sufficient capacity to connect into the local transmission network.

The proposed project represents a potential investment in excess of \$1billion in the local region, able to supply electricity equivalent to the needs of approximately 500,000 Queensland homes.

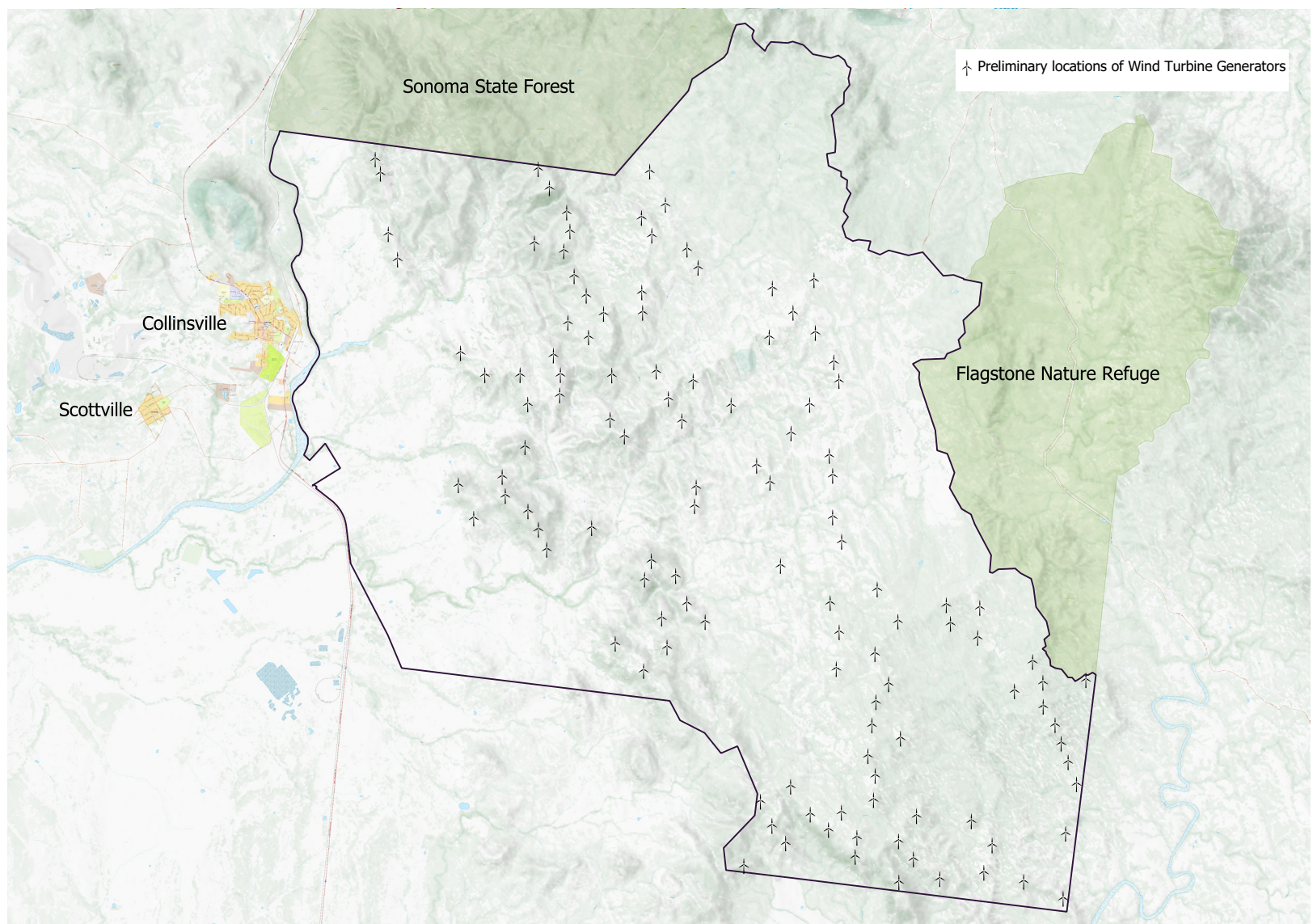
It would also support the recently-announced Queensland Energy & Jobs Plan, targeting a sustainable and affordable energy future for Queenslanders with 50% renewables by 2030, 70% by 2032, and 80% by 2035.

## Community Open House

We would like to extend an invitation to those community members who would like to find out more about the project to attend a Community Open House. The details are: Collinsville Community Centre 11 Conway Street, Collinsville

Tuesday 22 November	3pm-8pm
Wednesday 23 November	9am-1pm
Thursday 24 November	3pm-8pm

**Community members are welcome to drop in at any time to discuss the Springlands project with RATCH-Australia's representatives.**





# What opportunities are there for community input into this proposal?

At RATCH-Australia we have a proud history of developing positive long-term relationships with the communities in which we operate. Given the early development stage of the project, we are keen to benefit from local knowledge and understanding of community views about the proposal, to assist with its assessment and evolution of the project.

We recognise and appreciate that there will be a range of views about such a wind farm, and are keen to understand that feedback to ensure such considerations are taken into account in progressing the design and the various technical studies needed to assess the site.

Therefore, RATCH-Australia will ensure that the Collinsville and Scottville communities have every opportunity to be involved throughout the development process, and we are committed to provide information in a timely and transparent manner.

There are a number of ways that you can obtain information on the project and get involved in the development process, including:

- attending a Community Open House to be held at the Collinsville Community Centre between 3-8pm on the 22 or 24 November or 9am-1pm on the 23 November
- reading our community newsletters, such as this one, throughout the development phase;
- request a one-on-one meetings with the project team as an interested or concerned parties;
- providing feedback via our 24-hour contacts at **1800 280 013** or via email at **[enquiries@ratchaustralia.com](mailto:enquiries@ratchaustralia.com)**
- check out Springlands Wind Farm website – [www.ratchaustralia.com/springlands](http://www.ratchaustralia.com/springlands)



## What are we investigating?

Over the next 6-12 months, RATCH-Australia will investigate the site in more detail to assess the feasibility and potential risks for such a development, with work undertaken by various reputable contractors and consultants to include:

- installation of a number of wind monitoring masts, to measure the local wind speeds and hence anticipated energy potential;
- flora and fauna assessment, to understand the nature of biodiversity across the site, and the potential impacts from land development and operations;
- noise assessment to understand the potential for additional noise on neighbouring residences during construction and operation;
- visual assessment, to demonstrate / assess the potential effect on the current landscape values of the site;
- cultural heritage assessment, including consultation with the local Traditional Owners;
- assessment of potential impacts on local traffic patterns and local roads, particularly during the construction phase of the project;
- assessment of other potential risks from the proposal, such as on local aviation activities, and on the telecommunications systems in the area.

The scope of this work will be guided by the Queensland's Department of Development, Infrastructure, Local Government and Planning's environmental assessment and social impact assessment requirements and other best practice guidelines. These investigations, together with the information and views gathered from the community and government, will determine the feasibility of the project; and, as appropriate, be incorporated into a final design of the wind farm and the associated access tracks, substation and electricity grid connection.

As this work progresses, we will be sending out these newsletters on a regular basis to keep you informed on how our investigations are progressing, and about the evolution of the project.

## For more information

Check out [www.ratchaustalia.com/springlands](http://www.ratchaustalia.com/springlands)

Or call us on **1800 280 013**.



## Contact us

A dedicated email address and a 24-hour phone line have been established to allow local people to contact the project team.

Any enquiries should be directed to the details below.

Email: [enquiries@ratchaustalia.com](mailto:enquiries@ratchaustalia.com)  
Phone 24hr contact 1800 280 013  
Springlands Wind Farm  
RATCH-Australia Corporation  
Level 7, 111 Pacific Highway  
North Sydney NSW 2060

## Springlands Wind Farm