

LEGEND

- T01
PROPOSED TURBINE LOCATION - V117
V117 HUB HEIGHT = 90m
V117 ROTOR DIAMETER = 117m
V117 TIP HEIGHT = 148.5m
- T42
PROPOSED TURBINE LOCATION - V112
V112 HUB HEIGHT = 84m
V112 ROTOR DIAMETER = 112m
V112 TIP HEIGHT = 140m
- PROPOSED WIND FARM ROAD
- EXISTING ROAD
- NEW STORMWATER CULVERT & HEADWALL
(TYPICALLY ROUNDEL STILLCOR 2mm U.N.D.)
- HEADWALL TYPE
REFER DETAILS SHEET 0404
- EXISTING OVERHEAD ELECTRICAL
- DENOTES POWERLINK TOWER & 30m ZONE FROM CENTRE
(COORDINATES RECEIVED 25.11.16)
- ORIGINAL UXO BOUNDARY (SUBSTANTIAL)
- ORIGINAL UXO BOUNDARY (SLIGHT)
- WORKS BOUNDARY
- EXCLUDED ZONE BOUNDARY
- INDICATIVE WATERCOURSE
- UPDATED UXO BOUNDARY (RECEIVED CATCON 18.07.2017)
- UNDERGROUND AS BUILT U/G CABLES - 20180808
- MET MASTS - REFER TABLE
- MEWF SUBSTATION
- POWERLINK SUBSTATION
- AREA TO BE AVOIDED
(FUTURE SUBSTATION)
- CONSTRUCTION COMPOUNDS
- OPERATIONS AND MAINTENANCE BUILDING

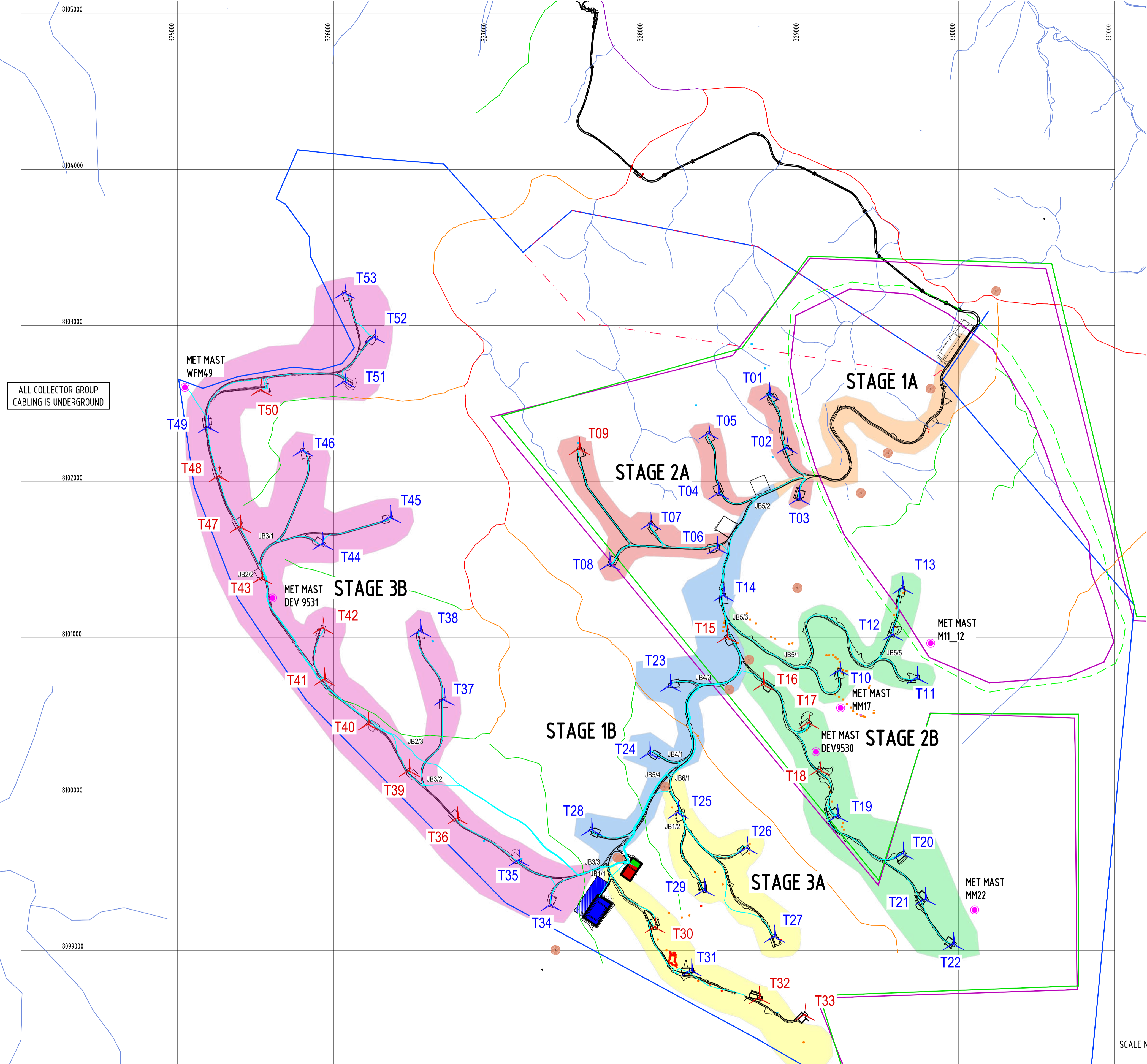
- SIGNIFICANT PLANTS**
- GREVILLEA GLOSSADENIA
 - HOMORANTHUS PORTERI
 - PLECTRANTHUS AMOENUS
 - MELALEUCA UXORUM
 - PROSTANTHERA CLOTTIANA
 - ACACIA PURPUREOPETALA
- NOTE: SIGNIFICANT PLANT SURVEY COORDINATES RECEIVED 25.11.2016

NOTES:

- DRAWING HORIZONTAL DATUM IS GDA94, MGA ZONE 55.
- ALL LEVELS ARE TO AHD (m).

RPEQ Certification:
 WALLBRIDGE GILBERT AZTEC
 MR DAMIEN BYRNE
 RPEQ 19028
 08 8223 7433

Signature: _____
 Date: 14 / 08 / 2018



MEWF TURBINE CO-ORDINATES - AS CONSTRUCTED						
TURBINE ID	EASTING	NORTHING	RL. (m)	HUB HEIGHT (m)	BLADE DIAMETER (m)	BLADE TIP RL. (m)
T01	328791.918	810255.956	819.538	90	117	968.038
T02	328903.02	810228.99	810.97	90	117	959.47
T03	328982.94	8101892	803.23	90	117	951.73
T04	328466	8101925.98	821.05	90	117	969.55
T05	328402.06	8102310.2	807.45	90	117	955.95
T06	328458	8101575	834.14	90	117	982.64
T07	328030.99	8101732	832.99	90	117	981.49
T08	327768	8101472	808.59	90	117	957.09
T09	327574.03	8102210.99	841.3	84	112	981.3
T10	32924.2.03	8100793.01	856.63	90	117	1005.13
T11	329739.526	8100745.116	839.592	90	117	988.092
T12	329581.612	8101020.402	806.575	90	117	955.075
T13	329643.489	8101320.753	808.758	90	117	957.258
T14	328498.13	8101272.17	843.86	90	117	992.36
T15	328520.64	8101005.69	869.68	84	112	1009.68
T16	328752.63	8100703.01	879.18	84	112	1019.18
T17	329043.55	8100459.46	927.54	84	112	1067.54
T18	329114.864	8100157.452	911.2	84	112	1051.2
T19	329228.402	8099858.861	891.904	90	117	1040.404
T20	329646.856	8099620.572	879.38	90	117	1027.88
T21	329775.511	8099321.975	907.447	90	117	1055.947
T22	329970.19	8099040.832	881.258	90	117	1029.758
T23	328157.03	8100695	809.98	90	117	958.48
T24	328024.27	8100261.99	818.73	90	117	967.23
T25	328206.01	8099881.01	848.49	90	117	996.99
T26	328648	8099654.94	849.16	90	117	997.66
T27	328823.794	8099088.239	910.989	90	117	1059.489
T28	327652	8099773.03	853.7	90	117	1002.2
T29	328376.791	8099384.729	900.43	90	117	1048.93
T30	328056.328	8099148.829	925.236	84	112	1065.236
T31	328216.616	8098849.896	9714.75	90	117	1119.975
T32	328646.934	8098711.192	1003.157	90	117	1151.657
T33	329017.99	8098586.999	1037.91	84	112	1117.91
T34	327391.98	8099290.05	858.62	90	117	1007.12
T35	327886.96	8099577.02	868.71	90	117	1017.21
T36	326792.98	8099844.98	845.63	84	112	985.63
T37	326707.95	8100605.99	831.64	90	117	980.14
T38	326556	810045.99	822.71	90	117	971.21
T39	326484.02	8100149.97	844.77	84	112	984.77
T40	326222.01	810044.8	849.69	84	112	989.69
T41	32594.103	8100734.01	869.25	84	112	1009.25
T42	325931.253	8101065.024	889.487	84	112	1029.487
T43	325538.97	8101383.06	858.39	84	112	998.39
T44	325929.98	8101603.01	853.46	90	117	1001.96
T45	326363.99	8101774.97	850.76	90	117	999.26
T46	325803	8102201.03	818.53	90	117	967.03
T47	325402.06	8101713.01	844.41	84	112	984.41
T48	325265.98	8102037.02	841.38	84	112	981.38
T49	325187.002	8102349.553	826.854	90	117	975.354
T50	325535.368	8102587.252	804	84	112	944
T51	326072.142	8102642.225	785.052	90	117	933.552
T52	326263.451	8102926.372	794.678	90	117	943.178
T53	326070.987	8103211.006	801.75	90	117	950.25

MEWF MET MAST LOCATIONS		
MAST ID	EASTING	NORTHING
WFM49	325047	8102605
MM11_12	329828	8100964.696
MM17	329246	8100552
MM22	330111.0001	8099256.357
DEV9530	329088	8100271
DEV9531	325608	8101256

INFORMATION ISSUE
NOT FOR CONSTRUCTION

SCALE N.T.S.

© Copyright 2011

REV	DETAIL OF REVISION	TSM	DB	APPD	CLIENT	DATE
A	INFORMATION ISSUE	TSM	DB			14.08.18

REFERENCE DRAWING	DRAWING No.

DRAWN	TSM	DATE	09.08.18	PROJECT	MT EMERALD WIND FARM
CHECKED	DB	DATE	14.08.18	TITLE	CIVIL WORKS
APPROVED	RPEQ No. 19028	DATE	14.08.18		
CONTRACTOR PROJ. No. WAD141161				SCALE	AS SHOWN
				DRAWING No.	A1
				SHEET	0003
				REV	A

DO NOT SCALE DRAWINGS FOR WORKING DIMENSIONS

I:\2014\141101 - 141200\WAD141161 - Mt Emerald Wind Farm\Detailed Design\MEWF-CI-DR-0003.dwg, A, 14/08/2018 4:35 PM, imulian