

# Beryl BESS Project Update

The proposed Beryl Battery Energy Storage System (BESS) at 5 Holleys Lane, Gulgong, is located 6km west of Gulgong in central west New South Wales.

The BESS is being designed to integrate with projects in the Central West Orana Renewable Energy Zone (REZ) to unlock a firm supply of power for up to 1.4 million homes – including homes in the Beryl and Gulgong area.

The BESS will store variable renewable energy generated in periods where supply exceeds demand, so that it can be dispatched at times of greater need.

Since our last community update in December 2023, the team heard from over 75 people at the Gulgong Society Show in February. We are continuing discussions with nearby landowners, as well as meeting with Mid-Western Regional Council officers and councilors seeking their feedback to guide our planning.



## EIS public exhibition expected mid-year

We are nearing the completion of our assessment reports responding to the Department of Planning, Housing and Infrastructure [Secretary's Environmental Assessment Requirements \(SEARs\)](#), preparing our Environmental Impact Statement (EIS) for the project. When we submit the EIS (expected mid-year), it is placed on public exhibition and we will be seeking your formal feedback. You can find out more about development approval process:

<https://www.planningportal.nsw.gov.au/major-projects/>.



*Existing site for proposed Beryl BESS  
as seen from Beryl Road*



*Proposed infrastructure as seen  
from Beryl Road*



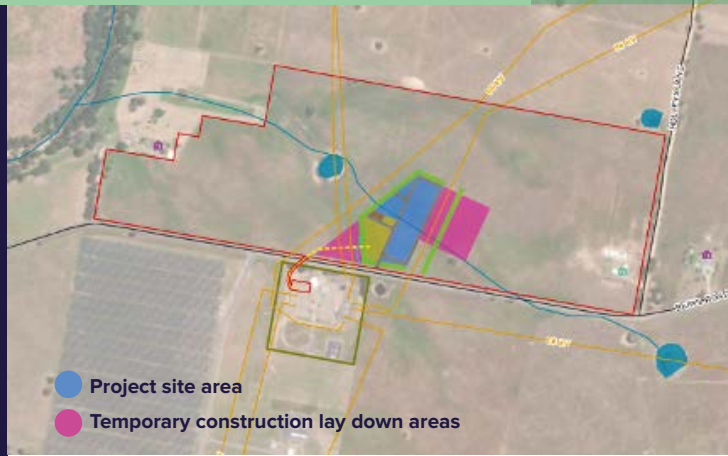
*Proposed infrastructure with  
landscaping as seen from Beryl Road.*

The above photo montages have been modelled using preliminary plans and Landscape and Visual Impact Assessment data. Infrastructure configurations and positioning will change to reflect the final specialist reports now underway for the Environmental Impact Statement (EIS) development planning assessment process. As our planning is progressed we will seek further community feedback informally and formally.

## What we've heard and how we've responded

We brought forward our Landscape and Visual Impact Assessment modelling, so we could show our nearest neighbours and the community what the proposed project would look like when completed and landscaped. Other key outcomes resulting directly from community feedback so far includes:

- working with community to design a targeted community benefits scheme to support Gulgong township and those living closest to the proposed facility;
- updating the design to furthest set-back distance possible from neighbouring landowners, moving the site closer to Beryl Road to minimise potential amenity impacts such as visual or noise;
- using 'mature' container (instead of tube) pioneer tree and vegetation stock for screening planting to reduce potential visual amenity impacts.



## Tell us what you think or ask a question

Your feedback will help us design a community benefit scheme and finalise our plans. There are many ways to provide feedback or ask a question. If you missed the RAC team's recent visit to the Gulgong Show you can book a personal online briefing, email your comments and questions to [berylbess@ratchaustralia.com](mailto:berylbess@ratchaustralia.com) or complete our survey by scanning the QR code below to visit our website:

<https://ratchaustralia.com/berylbess/#Survey>.

Our responses to common community questions are available on our website and cover topics like how the batteries work (see image below), as well as bushfire, safety, environment and water management and more.

## Inside a BESS

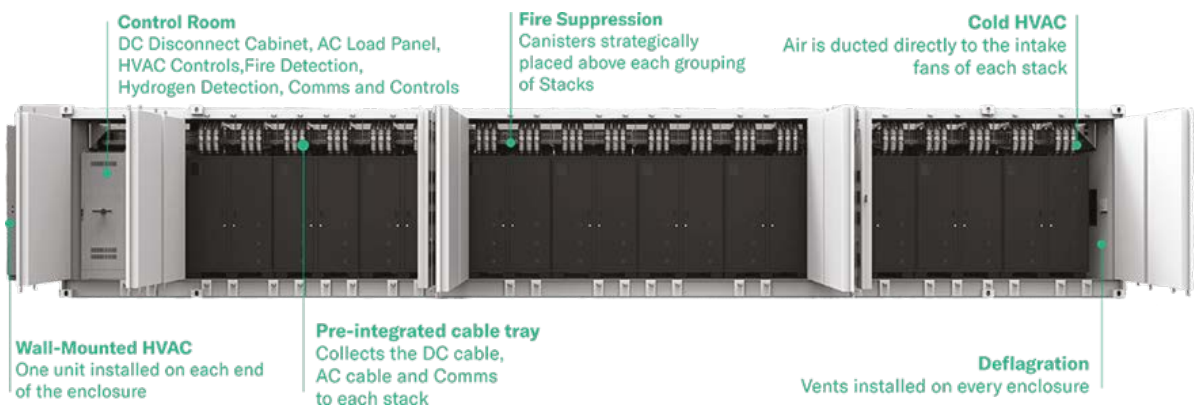


Image supplied by Powin (preferred battery supplier) showing the internal configuration and safety systems of a BESS unit

## Contact us



Email: [berylbess@ratchaustralia.com](mailto:berylbess@ratchaustralia.com)  
Phone: 24hr contact 1800 280 013  
Beryl BESS  
RATCH-Australia Corporation  
Level 7, 111 Pacific Highway  
North Sydney NSW 2060

**RAC**  
RATCH-Australia Corporation

**BERYL**  
BATTERY ENERGY STORAGE SYSTEM