



# Marulan Solar Farm a partnership in sustainability

The Marulan Solar Farm and Battery Energy Storage System (BESS) was announced in October 2022 as the first in several developments RATCH Australia Corporation (RAC) & Terrain Solar would be partnering.

It will have generation capacity of 152 MW (AC), with an associated Battery Energy Storage System (BESS) of 81 MW capacity, 162MWh energy storage. It will generate enough clean renewable energy to power the equivalent of approximately 56,000 average NSW homes.

RAC will build, own, operate and maintain the asset as part of their broader Australian portfolio, with construction expected to start in 2024 and take up around 18 months.

The solar energy produced will be used to send clean, renewable power into the NSW electricity grid to serve the needs of both the local and broader community, supporting the state's Electricity Infrastructure Roadmap.

## Project Update

In August 2023, the NSW Department of Planning & Environment approved the development application. To view the development approval or Environmental Impact Statement visit:

[www.planningportal.nsw.gov.au/major-projects/projects/marulan-solar-farm](http://www.planningportal.nsw.gov.au/major-projects/projects/marulan-solar-farm)

The next step is to finalise the grid connection agreement with Essential Energy and the Australian Energy Market Operator (AEMO).

Construction is expected to start in 2024 and take about 18 months, with operations starting 2025.

# Project overview

---



## Local economy

Wherever possible, our goal is to have a workforce that resides in the local area, maximising opportunities for local contractors, subcontractors and suppliers to share the benefits of the project.

Given the project will need the right people with the right skills for safe & timely delivery, it may be necessary during the construction stage to bring in workers with the required skills and experience to the region, if we cannot source them locally.

At the peak of construction, it is anticipated the project will provide up to 300 jobs, with opportunities in civil, electrical and mechanical engineering, traffic management, and general construction. A small team will also be required to manage operations for the approximate 30-year lifetime of the project.

We will continue to engage with the community about these opportunities as plans commence.

# Community

---

Our infrastructure is built to last for up to 30 years. This brings a responsibility to the communities that host our assets which we take extremely seriously.

RAC has a strong record working closely with communities in the region having developed the nearby Collector Wind Farm which has been operating since opening in 2021. Since then, the Community enhancement fund has received over to \$800,000.

The RAC project team is committed to engagement through every stage of the project's life cycle, ensuring the opportunity for local people and interested stakeholders to get in touch and share their views, questions and opinions. The team will continue working with the community and Goulburn Mulwaree Council to identify and support local community initiatives.



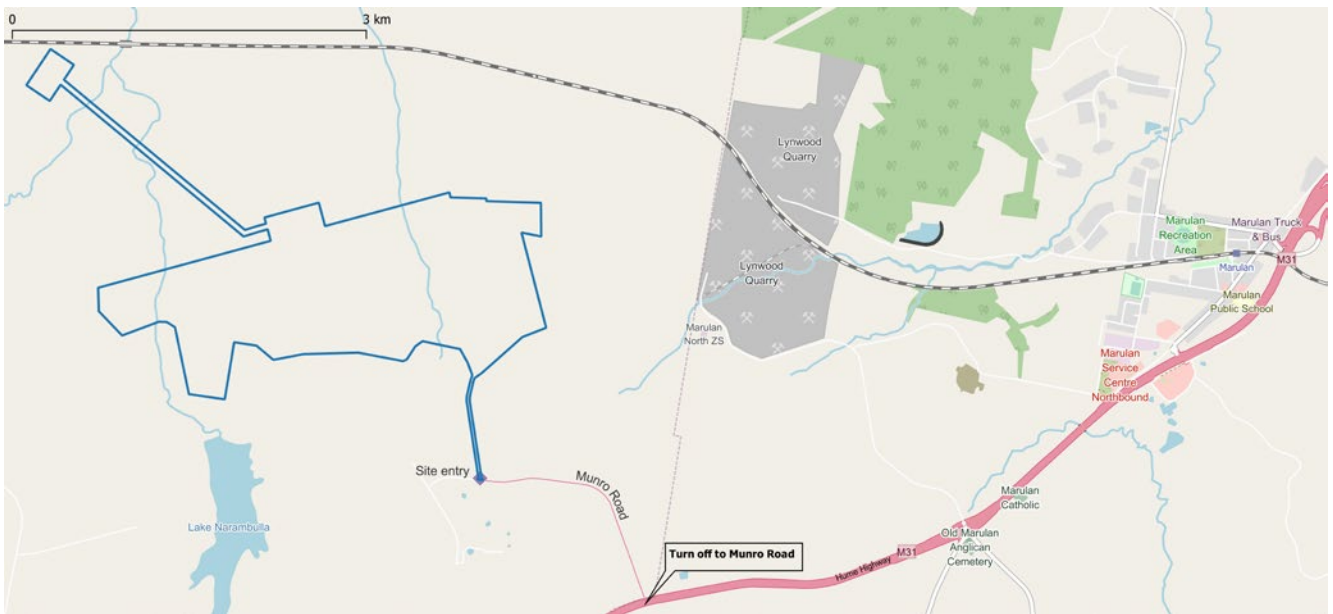
*Collector Community Hall improvements*

# Location

Marulan Solar Farm is located in the Goulburn Mulwaree Council area in regional NSW.

The location of the project and its design considers the landscape, environment, flora and fauna as well as the topography of the site with the aim of minimising potential physical and visual impacts.

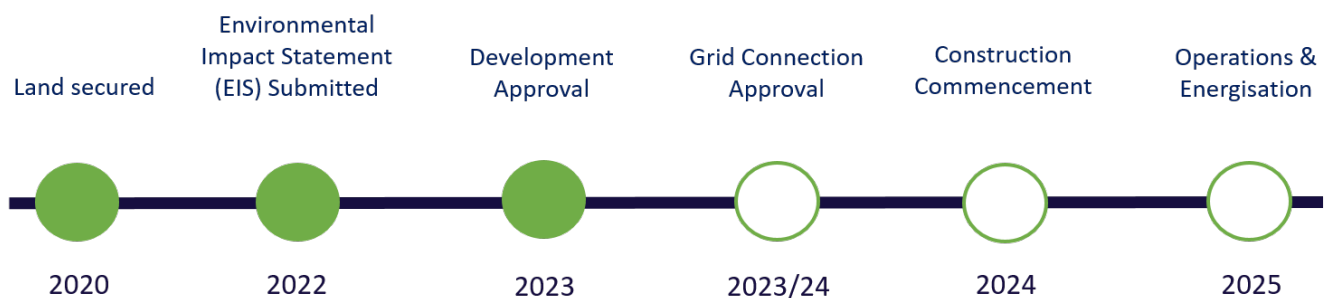
Limited road improvements will be undertaken on Munro Road to ensure safe access to the site by construction vehicles, as agreed with Council, and traffic management plans will be put in place. Post construction, road remediation will be undertaken as required.



Project site area (blue outline) including indicative substation connection points

# Timeline

The detailed design and construction management plans will be finalised in consultation with the community, regulatory stakeholders, RFS and Goulburn Mulwaree Council in 2024 prior to the start of construction activities.



# Design

---

The project has been designed within the landscape and topography of the site to minimise proximity and views from neighbouring properties.

The images shown here illustrate typical solar farm infrastructure, with a similar solar farm development that our partner Terrain Solar delivered at Molong in the central west region of NSW.



## For more information



[www.ratchaustralia.com/marulan](http://www.ratchaustralia.com/marulan)  
Email: [enquiries@ratchaustralia.com](mailto:enquiries@ratchaustralia.com)  
Phone: 24hr contact 1800 280 013  
RATCH-Australia Corporation  
Level 7, 111 Pacific Highway  
North Sydney NSW 2060

