



Collector Wind Farm

www.windfarms.net.au

{ renewable energy }

For more information

Contact Transfield Services Project Manager Nick Valentine on **(02) 9963 9924** or **valentinen@transfieldservices.com** with any questions.

Collector Wind Farm Project

Community Open House – Questions and Answers

Transfield Services hosted a Community Open House at Collector on Thursday 14 October to provide the community with information on the proposed Collector Wind Farm project and seek community views on the proposal. Over 100 community members attended the Open House and various views were expressed and questions asked. The community feedback received will be used by Transfield Services to guide the planning approval and wind farm design.

Below is a summary of the questions recorded at the Open House and from individual enquiries. Each question has our response. Should you require further detail on any of these matters, or have additional questions, please don't hesitate to contact Transfield Services' Project Manager, Nick Valentine, on 02 9963 9924 or by email at valentinen@transfieldservices.com.

Will aviation obstacle lighting (red lights) be required at the Collector Wind Farm?

Transfield Services does not anticipate installing aviation obstacle lighting at the Collector Wind Farm. Recent consultation with the Civil Aviation Safety Authority (CASA), together with recent developments at the Cullerin Wind Farm, suggest that this position is reasonable.

Does Transfield Services propose to establish a community fund and how would this be administered?

Transfield Services proposes to establish a community investment fund to provide assistance to community facilities and services in the locality of the wind farm. The design and administration structure of such a fund is currently being developed, with further detail to be provided in the next issue of our community newsletter.

What is the proposed construction access route to the wind farm site and how will damage to local roads be repaired?

A traffic and transport assessment is currently being undertaken to examine potential access routes to the wind farm site. Preliminary assessments indicate that the site could be safely accessed directly from the Hume Highway near Lerida South Road. Entering and exiting the site from this point would avoid the need to use local roads and will minimise the construction phase impacts on nearby residents.

Transfield Services priority is to avoid using local roads due to the potential for damage, disturbance to residents and local traffic impacts. Planning approval conditions for the project will require Transfield Services to repair any damage caused to local roads during the construction phase.

What makes up the \$400 million capital cost of the wind farm?

Approximately 60% of the capital cost of a wind farm is associated with the purchase of wind turbines. At present there are no wind turbine manufacturers in Australia, meaning that these components would need to be sourced overseas. A significant proportion of the capital cost - approximately 25%, or \$100 million - is construction activities (i.e. access track construction, foundations, cable installation etc.). It is this component that provides opportunities for local and regional suppliers and businesses. Approximately 120 full-time jobs are expected to be created during the two-year construction phase, making a substantial contribution to the local economy.

Further detail on the community and economic benefits of the Collector Wind Farm will be provided in Issue 2 of our community newsletter.

How will Transfield Services address the requirements of the Upper Lachlan Shire Council Wind Farms Development Control Plan (DCP)?

The provisions of the Wind Farms DCP will be addressed in the environmental assessment document to be submitted to the NSW Department of Planning.

How long will it take to offset the greenhouse gas emissions associated with the construction of the wind farm?

The greenhouse gas emissions generated during the manufacture, construction, operation and decommissioning phases (including transport of components, production of concrete and steel etc.) would be offset in less than 9 months of wind farm operation.

How will the visual impact of the wind farm be assessed and what is the cumulative impact associated with the Cullerin project?

Transfield Services will be undertaking a comprehensive visual assessment of the proposal. This will include a landscape character assessment, consideration of the visual impact of the wind farm on the local landscape, and assessment of the cumulative visual impacts. A series of photomontages will be prepared, simulating the appearance of the wind farm from various viewpoints.

Will construction and maintenance workers be employed from the local area?

The Collector project would generate employment in the local area during construction and operation. Workers required for the project would include plant operators, truck drivers, mechanics, welders, fencers, electricians, labourers and other trades typically used in civil construction. It is estimated that the onsite workforce during the construction phase would peak at around 120 employees.

Transfield Services will look to recruit skilled construction and maintenance workers from the local area and involve local contractors and suppliers in the construction phase of the development.

Will property values decrease as a result of the wind farm?

A recent study by the NSW Valuer General into the impacts of wind farms on property values concluded that in most cases wind farms do not appear to negatively affect property value.

Who would be responsible for decommissioning the wind farm at the end of its operating life?

Decommissioning of the wind farm at the end of its operating life would be the responsibility of the wind farm owner. Current development approval conditions in NSW require that a wind farm site is returned to its pre-development condition within 12 months of decommissioning. Furthermore, conditions in lease agreements between the proponent and landowners require that all above-ground infrastructure be removed at the end of the lease.



At what stage in the NSW Government planning approval process is the project at?

The project is currently at the beginning of the planning approval process. Transfield Services is aiming to submit its planning application to the NSW Department of Planning before Christmas. Following submission there are a number of stages including public exhibition, response to public comments on the proposal and assessment by the Department of Planning. The planning process concludes with a decision by the Minister for Planning to approve the project or otherwise.

When will the planning application be submitted to the Department of Planning and when will the documents be made available to the public?

Transfield Services proposes to submit the planning application prior to Christmas. Allowing for the Department's review processes, the documents are expected to be available for public comment in the first quarter of 2011.

Transfield Services will advise the community when the planning documents become available.

Will there be ongoing consultation with the community and will there be another Community Open House?

Transfield Services will maintain its community and stakeholder engagement program throughout the development and operation phases of the project. This will include: periodic newsletters at project milestones; posting of information on the Transfield Services wind farms website (windfarms.net.au); and ongoing dialogue with individual stakeholders. A further Community Open House is proposed in early 2011 prior to the public exhibition of the planning application documents. We are committed to being open and transparent throughout this process.

Will financial compensation be provided to residents within a 5km radius of the wind farm?

No direct financial compensation to individuals is proposed. Transfield Services will establish a community investment fund, allowing a share of the wind farm revenue to be directed toward community projects.

Does Transfield Services propose to acquire any properties affected by noise and other impacts?

Transfield Services does not anticipate acquiring any properties. The wind farm layout will be designed to meet current NSW Government noise guidelines at all neighbouring residences. Similarly, the impact of the proposal on other environmental factors will be assessed.

What studies are being conducted into the health and social impacts on the community?

A recent review by the National Health and Medical Research Council (NHMRC) concluded that there is no evidence wind turbines impact the health of nearby residents. The World Health Organisation (WHO) also argues that wind power represents one of the most benign of all forms of electrical generation (alongside other renewable technologies) in terms of direct and indirect health effects. Nevertheless, Transfield Services will undertake a review of current studies into the health impacts of wind farms as part of the environmental assessment.

The socio-economic impacts of the proposal on the local community will also be considered in the environmental assessment.

How will noise levels be monitored during the operational phase of the wind farm and what enforcement is there if levels are exceeded?

The Department of Planning's conditions of approval for the development would require preparation of a Noise Compliance Plan for the operational phase of the project. This would require monitoring of noise levels at nearby residences in the first three months of operation. If noise limits are exceeded, Transfield Services would be required to take steps to reduce noise levels to comply with the limits. If noise compliance cannot be achieved in a reasonable timeframe, then the offending turbines would be turned off.

Why has the region around Collector been targeted for wind power development?

The Collector area falls within the NSW/ACT Border Region Renewable Energy Precinct, one of six such precincts identified by the NSW Government. These precincts have been established in areas of the state with the best-known wind resources. The Collector site is also very close to the electricity grid (limiting the need for transmission lines) and has relatively low environmental constraints.

www.transfieldservices.com

Will the project proceed if there is strong community opposition?

Transfield Services has commissioned a community attitudes survey for the Collector project. The outcomes of this survey, together with feedback received at the Community Open House and from other correspondence, will be reviewed and documented in the environmental assessment. The Department of Planning will then consider these findings, together with the comments received on the planning documents, before making a decision on whether the project will proceed.

The wind farm has the potential to supply electricity equivalent to the needs of 80,000 NSW homes. Is this amount of electricity produced at all times?

The figure of 80,000 homes is an average figure based on the expected annual energy generated by the wind farm. Energy generation has been calculated using the data gathered from wind monitoring at the site. When wind speeds are too low to generate energy (approximately 5% of the time) no power would be supplied to the grid. On the other hand, when wind speeds allow maximum generation (approximately 10% of the time) the equivalent of approximately 250,000 homes could be supplied.

What is the required separation distance between the wind turbine towers?

The spacing between wind turbines is based on the size of the towers and the wind conditions at the site. For the towers under consideration at Collector a separation distance of between 270 and 450 metres will be required.

What is the fire risk associated with wind turbines?

There have been a small number of wind turbine fires in Australia; however the overall risk is low according to organisations such as the Victorian Country Fire Authority (CFA). The low fire risk is due to a number of factors:

- Each wind turbine is connected to a control centre which will shut down the turbines if there is a risk of overheating;
- Wind turbines are a passive technology and have few flammable materials;
- Although wind turbines attract lightning, the built-in lightning protection systems safely dissipate the electricity to the ground; and
- Wind turbines are located in cleared areas, limiting the chance of fires spreading if they do occur.

Transfield Services is currently looking at new and innovative ways to reduce this risk, including investigating opportunities for installing automatic fire extinguishers within each turbine housing.

Where can I get further information about the project?

Should you have specific queries about the project, please contact Transfield Services' Project Manager, Nick Valentine, on 02 9963 9924 or by email at: valentinen@transfieldservices.com.

Transfield Services will be issuing a project newsletter (Issue 2) prior to Christmas, with a focus on the community benefits of the wind farm and the planning process, including details on the public comment arrangements. In addition, all published material will be available on Transfield Services' wind farm website – windfarms.net.au.

Wind Farm Workshop

The NSW Department of Environment, Climate Change and Water will be hosting a landholder wind farm workshop in Yass on Monday 6 December 2010. This one-day workshop is open to all those interested in wind farms and will be held at the Yass Soldiers Club Auditorium from 9.00am to 4.00pm. Further details can be obtained by emailing the Department's representative at andy.hughes@environment.nsw.gov.au.

Apology

Transfield Services wishes to extend an apology to the Edwards family for including their property "Bohara" on the wind farm layout plan tabled at the Open House without their permission. Transfield Services regrets any distress to the Edwards caused by this oversight.





Invitation to Community Open House Collector Wind Farm

RATCH Australia Corporation (RAC), the new owner of the proposed Collector Wind Farm, would like to provide you with updated information about the development and invite you to provide input into the development process.

RAC is eager to ensure that you are fully informed about the proposal, are actively engaged on your issues of concern and have an opportunity to ask questions and provide views on the proposal. We will be holding a Community Open House session on the 13th of October and will be able to provide you with updated information on the project, and information on the development approval process ahead.

Community Open House

**Collector Memorial Hall, Bourke Street, Collector
3.00pm until 7.00pm, Thursday 13 October**

This forum is an opportunity for you to provide feedback on the proposal prior to the submission of the Environmental Assessment Report (EAR). The EAR is the primary document used by the Department of Planning and Infrastructure in the assessment of the proposed project and shall be publicly available once submitted.

Information on the proposed Collector Wind Farm is available on the RAC wind farm development website at **www.windfarms.net.au**. Information presented at the Community Open House will be available at this website.

We hope that you will take this opportunity to make a contribution to the Collector Wind Farm's development and we look forward to seeing you at the Community Open House.

RAC
RATCH-Australia Corporation



Collector Wind Farm Development

www.windfarms.net.au

Toora wind farm in Victoria, owned by RAC



Collector Wind Farm Development An Update

Since the previous Community Open House held in March 2011, there have been a number of developments on the Collector Wind Farm proposal.

A new owner

In July 2011, the Collector Wind Farm development was sold by Transfield Services to RATCH Australia Corporation Limited (RAC). RAC is an unlisted company owned 80% by Ratchaburi Electricity Generating Holding PCL, a leading Thai-based power generation company, and 20% by Transfield Services. RAC owns three operating wind farms in Australia and a portfolio of wind farm development projects. The Transfield Services development team has transferred employment to RAC, so the people that you have been dealing with in relation to the Collector Wind Farm to date will remain the same.

Review of the Environment Assessment Report

The Draft Environment Assessment Report (EAR) was submitted to the Department of Planning and Infrastructure (DoPI) for review in March 2011 and assessed against the Director-General's Requirements. The EAR was also provided to the NSW Office of Environment and Heritage (OEH) for review of ecological and heritage matters. Following this review OEH required RAC to undertake additional ecological investigations. Over the past several months RAC has been working closely with OEH to:

- microsite turbines to avoid impacts on significant vegetation;
- establish a vegetation offset area to compensate for vegetation removed during the construction phase; and
- undertake site surveys for two threatened lizard species: the Striped Legless Lizard and Pink-tailed Worm Lizard.

We have been successful in securing a vegetation offset area within the development envelope, which will allow us to secure 10 times as much vegetation as we need to clear. This vegetation offset will be maintained in perpetuity.

Reducing potential noise impacts

The revised wind farm layout complies with the baseline limit under the South Australian Environment Protection Authority's (SA EPA) Wind Farms Environmental Noise Guidelines (2009). The Guidelines represent industry best practice, are some of the toughest in the world, and have been adopted by DoPI for wind farm developments in NSW.

The baseline noise level under the Guidelines is 35 decibels (dB(A)). This limit has been established by the SA EPA specifically for localities which are primarily intended for rural living. The results of the noise assessment show that this limit will be met at all non-involved residences under the highest noise emission conditions for the turbines.

Your say...

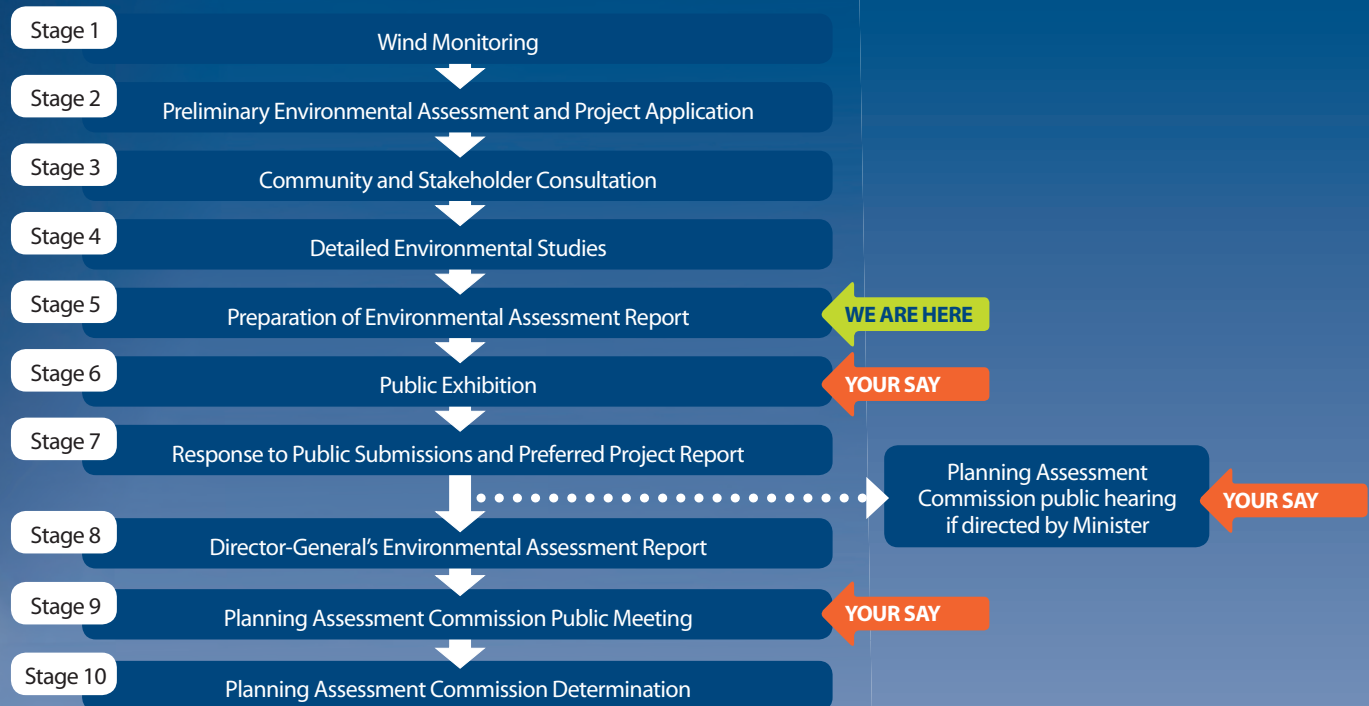
The Approval Process

The Collector Wind Farm is being assessed under Part 3A of the *Environmental Planning and Assessment Act 1979*.

During the next phase of the approval process, there will be a number of opportunities for members of the community to make formal submissions

about the proposed development to the Department of Planning and Infrastructure (DoPI).

The remaining approval process is expected to take at least 12 months, and if approval is granted it is likely to be at least 2 years before construction commences. The following flowchart summarises the planning process and highlights the opportunities for public comment.



The draft Environmental Assessment Report (EAR) for the Collector Wind Farm development is currently being revised to address comments received from DoPI and the Office of Environment and Heritage (OEH). The community feedback gained through the Open House and one-on-one consultation will be included in the final draft EAR prior to resubmission to DoPI for review.

Public Exhibition

Once DoPI and other government agencies are satisfied that the EAR adequately addresses the Director-General's Requirements, it will be placed on public exhibition. During the public exhibition period any person may make a submission to the Director-General of DoPI regarding the project. While the exhibition period will be a minimum of 30 days, RAC will be recommending to DoPI that this period be extended to 60 days to allow every opportunity for public comment.

We will advise the community in advance of the exhibition period commencing and the EAR will be made available as follows:

- in hard copy at several public locations, including the DoPI Head Office in Sydney, Upper Lachlan Shire Council offices, Goulburn Mulwaree Council offices and Gunning Library;
- on the DoPI website;
- on the RAC wind farms website – www.windfarms.net.au
- on CD-ROM by request.

Planning Assessment Commission

The Planning Assessment Commission (PAC) provides the Minister for Planning and Infrastructure with the option to refer developments to an external panel of decision makers to determine whether to approve the development. The PAC is independent and is not subject to the direction or control of the Minister.

The Minister has delegated decisions on remaining Part 3A projects to the PAC. The PAC will determine whether to approve the Collector Wind Farm, or otherwise. Under this process the PAC may hold a public meeting or a public hearing, which will allow people interested in the proposed development to address the Commission. This provides an opportunity for members of the community to present their opinions directly to the independent decision-maker.

Where can I get further information?

The RATCH Project Team is available for consultation throughout the remainder of the approval period. Please contact either Nick Valentine or Anthony Yeates should you wish to discuss any matter related to the project:

Nick Valentine

Project Director, APP Corporation

Email: nick.valentine@app.com.au Phone: 02 9963 9924

Anthony Yeates

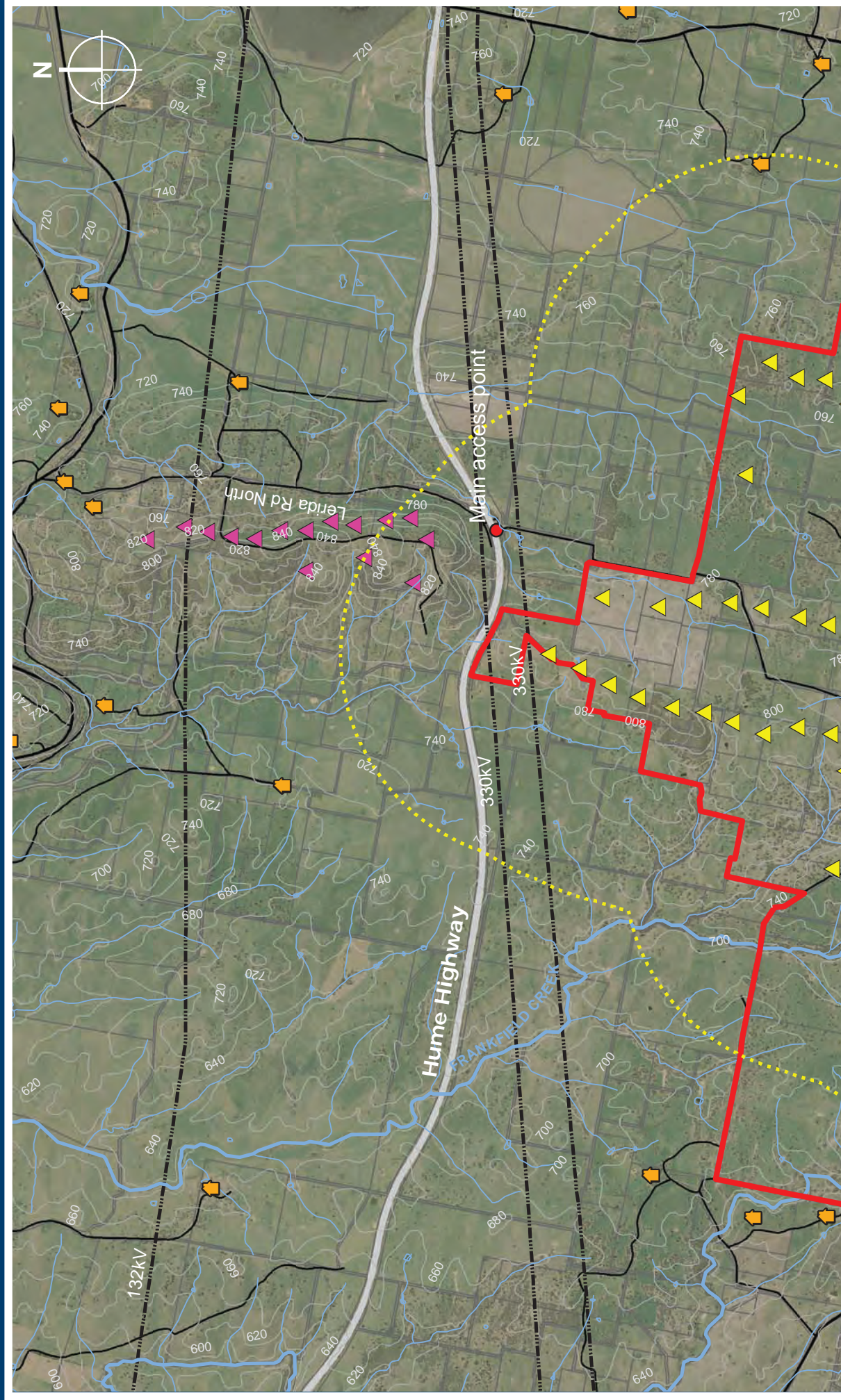
Development Manager, RATCH Australia Corporation Limited

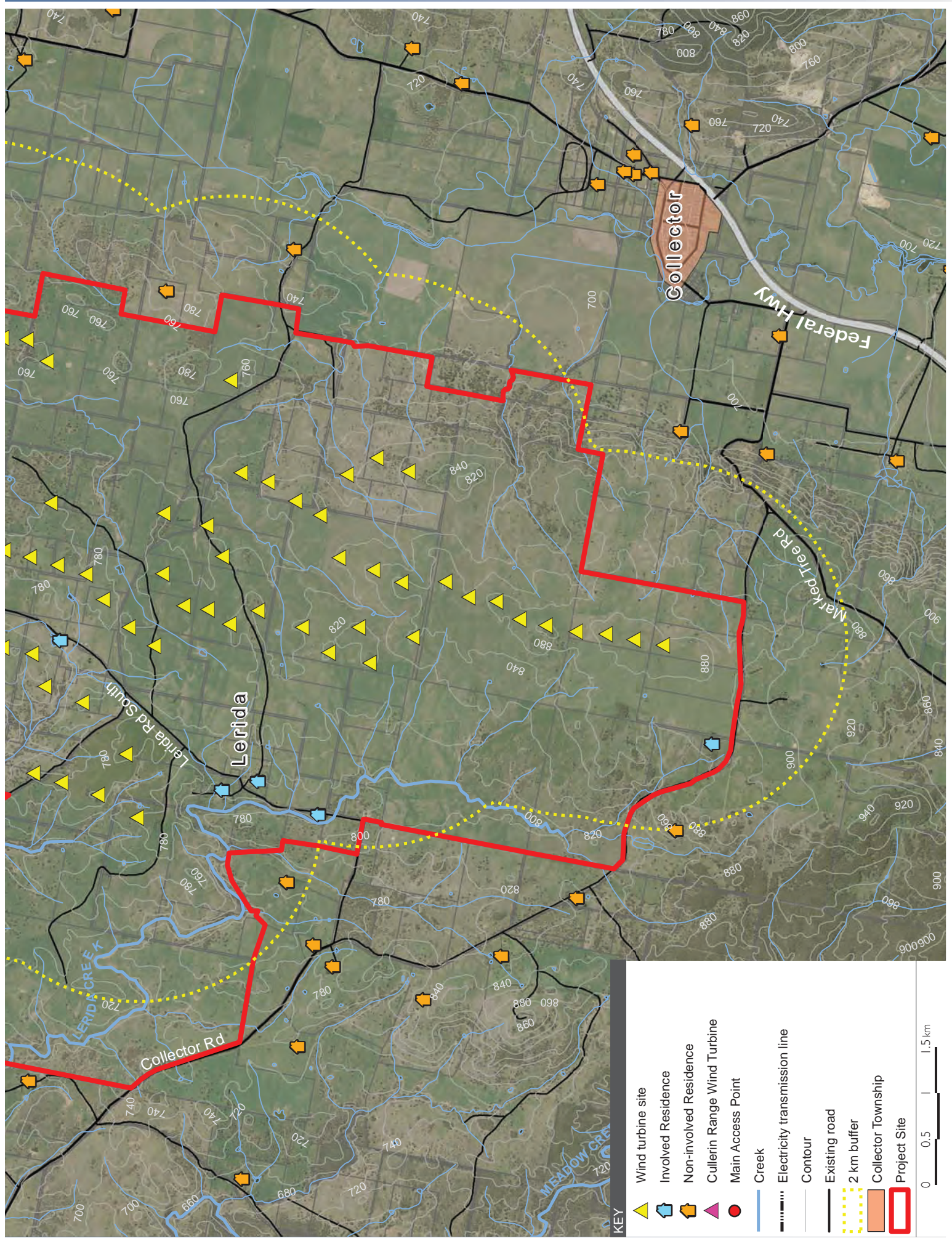
Email: Anthony.Yeates@ratchaustralia.com Phone: 02 9464 1382

Collector Wind Farm Development – Updated Layout



The map below shows the revised wind turbine layout for the Collector Wind Farm. A number of changes have been made to the layout since it was originally presented in October 2010. The number of turbines has been reduced from 80 to 69 to reduce visual and noise impacts, and to avoid potential telecommunications interference. A number of turbines have been also been moved slightly to minimise the need for vegetation clearance.





KEY

- Wind turbine site
- Involved Residence
- Non-involved Residence
- Cullerlin Range Wind Turbine
- Main Access Point
- Creek
- Electricity transmission line
- Contour
- Existing road
- 2 km buffer
- Collector Township
- Project Site

0 0.5 1.5 km

Collector Wind Farm Development The Facts

Owner committed to the community, long term – RATCH Australia Corporation (RAC) is different from many wind farm developers as it is also a long-term owner. We want to work with the local community during both the development and operating phases of the wind farm. RAC owns and operates three wind farms in Australia and is currently working on a portfolio of wind farm developments located around the country.

Community consultation – RAC is eager to ensure that you are fully informed about the Collector Wind Farm, are actively engaged on your issues of concern and have an opportunity to ask questions and provide views on the proposal. Wherever possible, we will incorporate your feedback into the design of the project and into our Environmental Assessment Report before it is resubmitted to DoPI.

Clean, green energy – the Collector Wind Farm has the capacity to generate enough renewable energy to power 80,000 NSW homes and save an estimated 500,000 tonnes of greenhouse gas emissions per annum.

Benefits for the Collector area – the Collector Wind Farm is expected to provide over 100 jobs during construction and at least 10 full-time positions during operation. RAC encourages its contractors to source goods and services from the local area and there is the potential for apprenticeships and other industry training. The wind farm will stimulate local businesses and provide a direct economic contribution of approximately \$180,000 per annum to the Collector community.

Wind turbines are safe – Infrasound or low frequency noise generated by wind turbines is the same as natural sources such as wind and rivers, or from road traffic. There is no peer-reviewed, scientific evidence to link wind turbines to adverse health effects.

Ecological offsets – the Collector Wind Farm will conserve 10 times the area of vegetation cleared for the proposal.

Noise – the wind farm layout has been designed to comply with the South Australian Environment Protection Authority's (SA EPA) Wind Farms Environmental Noise Guidelines (2009). These guidelines represent industry best practice, are some of the toughest in the world, and have been adopted by DoPI for wind farm developments in NSW.

Wind turbines do not pose a significant fire risk – The fire risk is very low, and there will be a fire management plan developed with the local fire authorities.

Committed to rehabilitating the land – Our commitment to decommission the turbines once they have reached the end of their useful life will be documented in our land lease arrangements and will be a condition of our consent from DoPI if the project is approved. Host landowners will not be responsible for removing the wind turbines.

RAC
RATCH-Australia Corporation

www.windfarms.net.au



Where can I get further information?

The RATCH Project Team is available for consultation throughout the remainder of the approval period. Please contact either Nick Valentine or Anthony Yeates should you wish to discuss any matter related to the project:

Nick Valentine

Project Director, APP Corporation

Email: nick.valentine@app.com.au Phone: 02 9963 9924

Anthony Yeates

Development Manager, RATCH Australia Corporation Limited

Email: Anthony.Yeates@ratchaustralia.com Phone: 02 9464 1382

Invitation

one-on-one consultation

Collector Wind Farm

RATCH Australia Corporation (RAC), the new owner of the proposed Collector Wind Farm, would like to provide you with updated information about the development and invite you to provide input into the development process.

RAC is eager to ensure that you are fully informed about the proposal, are actively engaged on your issues of concern and have an opportunity to ask questions and provide views on the proposal. To assist this process, we would like to offer you a one-on-one consultation on Wednesday 12 October or Thursday 13 October, or at other times by request. If you would like to have a one-on-one consultation with the development team please contact **Chris Thompson** on **02 9963 9956** or at **chris.thompson@app.com.au** to arrange a time.

As well as this, we will be holding a Community Open House, and will be able to provide you with updated information on the project, and information on the development approval process ahead.

Community Open House

Collector Memorial Hall, Bourke Street, Collector
3.00pm until 7.00pm, Thursday 13 October

These forums are an opportunity for you to provide feedback on the proposal prior to the submission of the Environmental Assessment Report (EAR). The EAR is the primary document used by the Department of Planning and Infrastructure in the assessment of the proposed project and shall be publicly available once submitted.

Information on the proposed Collector Wind Farm is available on the RAC wind farm development website at **www.windfarms.net.au**. Information presented at the Community Open House will be available at this website.

We hope that you will take this opportunity to make a contribution to the Collector Wind Farm's development and we look forward to seeing you in a one-on-one consultation or at the Community Open House.

Sincerely

Anthony Yeates

Project Director, RATCH Australia