



Collector Wind Farm Community Trust

Funds available to Collector every year

Find out more

5pm – 8pm Friday 29 January
9am – midday Saturday 30 January
Collector Memorial Hall

RAC
RATCH-Australia Corporation

Collector
Wind Farm

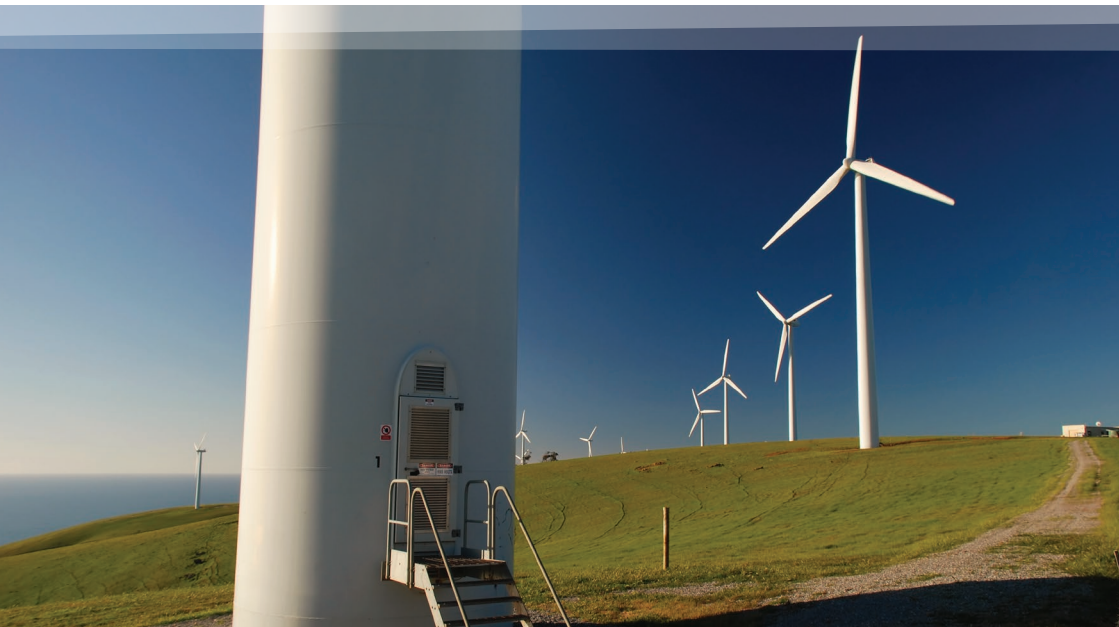
Collector Wind Farm began generating much-needed renewable electricity in late 2020.

As well as producing safe, clean, reliable power, the wind farm will also donate more than \$250,000 every year - in excess of \$6m over its expected working life - into two funds to support local projects.

One fund - the Collector Wind Farm Community Trust - will be managed by local people.

In 2021 wind farm owners RATCH-Australia will contribute \$88,000 into the Trust and \$66,000 (linked to inflation) every following year.

The second fund will be administered by Upper Lachlan Shire Council and managed in accordance with the council's S355 guidelines.



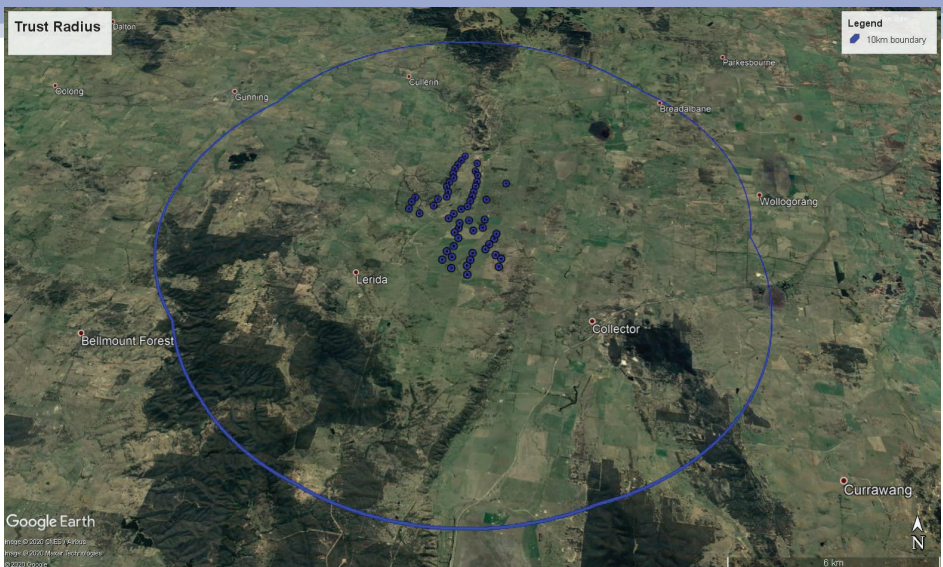
Who can apply?

Groups who can apply include:

- ◆ Not-for-profit groups
- ◆ Community groups
- ◆ Sports clubs
- ◆ Interest groups
- ◆ Local associations
- ◆ Education bodies
- ◆ Charities
- ◆ Private individuals

Projects, events or initiatives within 10km of a Collector Wind Farm turbine are eligible for support.

Applicants will have to explain how their proposal will benefit the local area.



Type Of Projects

The Trust is designed to be open to as wide a range of ideas as possible.

As long as applicants can demonstrate how their project benefits the community, the Trust is open to projects big or small, simple and straightforward, or groundbreaking and exciting!

There are a handful of things the Trust isn't able to support, such as requests covering the costs of alcohol or gambling, salaries, overseas travel or political campaigning.

We strongly recommend that applicants take a look at the guidelines on the project website at collectorwindfarm.com.au before submitting their form to make sure they are eligible.





How To Apply

Grants will be made in two rounds each year. Applications for the first round will be open from 1 to 28 February and for the second between 1 to 31 August.

Application forms will be available on the wind farm website at collectorwindfarm.com.au/community-enhancement-fund

Applicants are encouraged to attach quotes for materials or any other information that helps to strengthen your application.

Previous applicants – successful or unsuccessful – are encouraged to apply again.

How Are Projects Assessed?

Once applications are received, they are checked to see they meet the Trust criteria. It's possible we might ask for extra information to make sure.

All eligible applications will then be passed onto the advisory committee for assessment.

The committee will aim to meet as soon as possible after applications close.

After decisions are made about which projects to support, we'll let applicants know whether they were successful, partially successful or unlucky this time.

If you missed out and want your application to be considered in the next round, you will need to send it again.



Local Advisory Committee

A very important aspect of the Collector Wind Farm Community Trust is that it is steered by local volunteers.

Penelope Marshall, Ed Geishofer and Tony Walsh make up the first advisory committee for the Trust.

They have shaped the way the Trust will operate, will review applications and make recommendations about how the money should be used.

Penelope, Ed and Tony will serve on the committee until 2023 and we are very grateful for their efforts.

You can ask them about the Trust and also let them know if you would like to be involved in guiding the wind farm's legacy to Collector in future years.





Find out more

5pm – 8pm Friday 29 January

9am – midday Saturday 30 January

Collector Memorial Hall

You can contact us by:

Phone: 1800 280 013

Email: communityfund@ratchaustrialia.com

Post: Collector Wind Farm Community Trust,
PO Box 1058, North Sydney NSW 2059

Visit www.collectorwindfarm.com.au

