

# Collector Wind Farm: What's Next?

As you can imagine, it's one thing to develop and implement the process that seeks approval to build a wind farm, another entirely to build it. By any measure, RATCH-Australia's ('RATCH's') Collector Wind Farm Project is a big job.

**Since Development Approval ('DA') for the construction and operation of our wind farm was granted late last year, a good deal of planning work has been done but it will be some time before you see actual work on site. Nevertheless, we're committed to keeping you informed about what we're doing, even if, for a time, it's largely invisible.**

This newsletter, the first of a number planned for 2014, provides some details about the DA, gives updated project information concerning the approved project layout, and outlines the next steps that RATCH intends to take as the Company moves towards the construction phase, which we expect will begin in 2015.

As was widely reported, in December 2013, following a lengthy process of Government consideration and review, the NSW Planning Assessment Commission ('PAC') approved RATCH's development application for a wind farm near Collector NSW.

The PAC endorsed an earlier decision to approve the project made by the NSW Department of Planning and Infrastructure ('the Department').



**A message from Geoff Dutton**

Executive General Manager Business Development, RATCH-Australia

**“Welcome to our latest Collector Wind Farm community newsletter.**

Following approval of our Collector Wind Farm proposal in December, our team has commenced work on the project and we hope to commence turbine construction in 2015.

We know that there are still some in the local community who don't support our project but we hope that the approval to proceed can mark a turning point in our relationship to which we are committed for 25 years at least.

Our other Australian wind farms have been operating for many years and we remain welcome citizens in those communities. Our wind farms provide employment, funding for schools and community projects, and generate clean, green, renewable energy that contributes to the bipartisan '20% renewables by 2020' target.”

**CLEAN ENERGY NOW.**

**RATCH**

**RATCH-Australia Corporation**

# What was approved:

## **Final PAC approval was for 55 wind turbines plus associated civil and electrical infrastructure.**

As instructed by the PAC, RATCH has now removed eight of the southernmost turbines from the approved layout.

An updated project chart, indicating the locations of the approved turbines, is shown on the page opposite.

Both the Department and the PAC concluded that the proposal addressed all of the major concerns raised via submissions at the Public Meeting, namely noise and health issues, visual amenity and biodiversity.

## **The Department concluded:**

*"The Department has undertaken a comprehensive assessment of the merits of the Project and considers that all environmental issues associated with the construction and operation of the wind farm have been addressed and that the Project can achieve an acceptable level of environmental performance through the application of stringent conditions of approval and the Proponent's Statement of Commitments to manage community concerns regarding amenity, health and environmental impacts. The Department considers that the Project is justified and in the public interest and should be approved subject to the recommended conditions of approval and the Proponent's Statement of Commitments."*

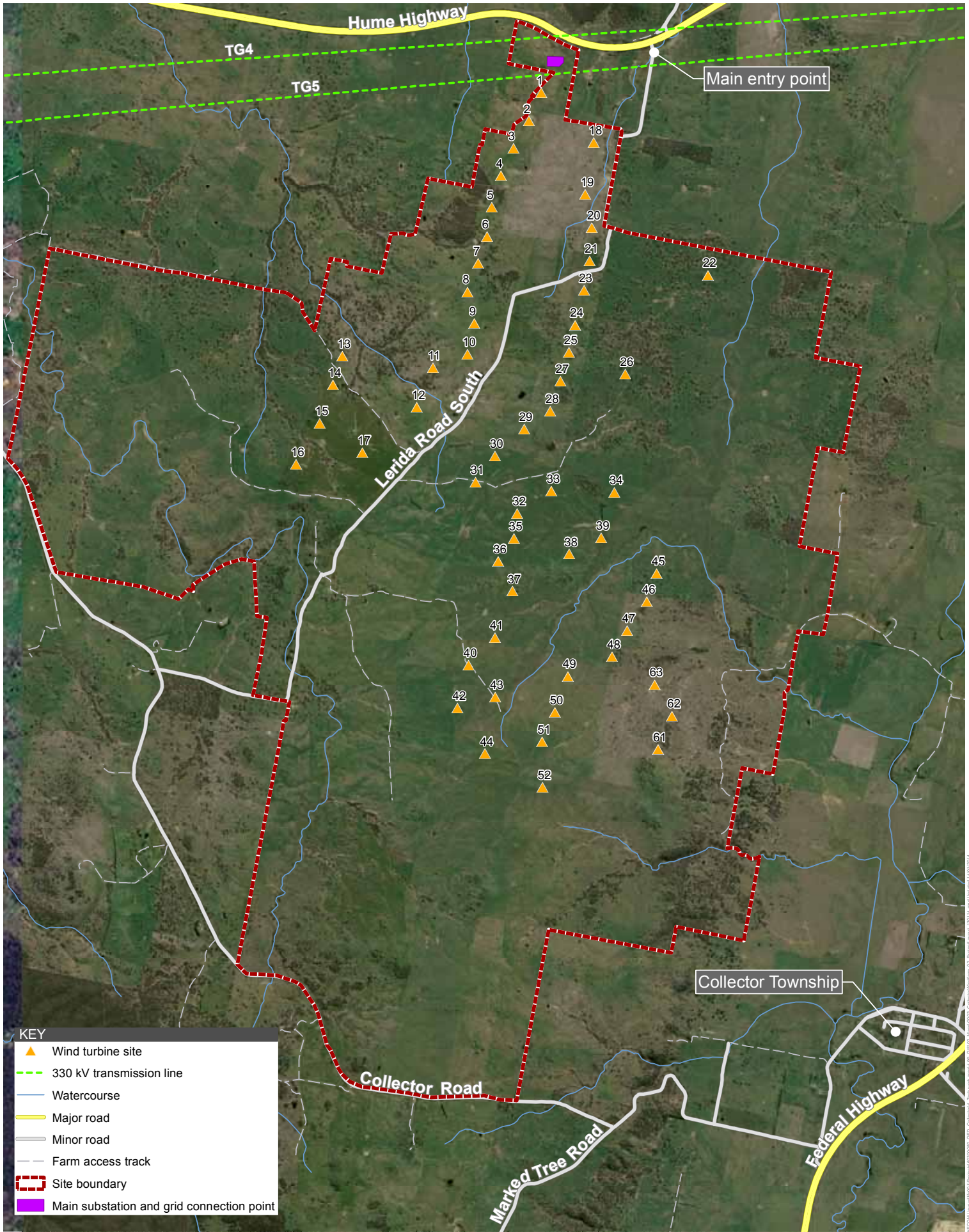
Approval, nevertheless, is conditional on addressing a wide range of matters covering:

- Environmental performance
- Community information, reporting and auditing
- Construction management
- Operational management

For those interested in more detail, the Department's assessment and the PAC's determination can be found in full here.

<http://www.pac.nsw.gov.au/Projects/PACDeterminations/tabid/104/ctl/viewreview/mid/459/pac/340/view/readonly/myctl/rev/Default.aspx>

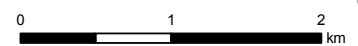
[http://majorprojects.planning.nsw.gov.au/index.pl?action=view\\_job&job\\_id=3778](http://majorprojects.planning.nsw.gov.au/index.pl?action=view_job&job_id=3778)



**COLLECTOR WIND FARM  
PAC APPROVED LAYOUT 2 DECEMBER 2013**

JAN 2014

Source: Land and Property Information (2013), AECOM (2013)



# Collector Wind Farm – what has to be done in 2014?

**RATCH has already begun to advance the many design, engineering, environmental and commercial issues that must be completed before the first sod is turned on site. Our goal is to finalise all of these issues within 10-12 months so that construction can begin in 2015.**

Key matters to be settled this year include:

- **Post-approval plans and consents:**  
The PAC's approval document contains a number of conditions attached to the consent. These require us to do additional surveys, planning or studies before we can commence construction.
- **Grid connection:**  
Our project will connect into the National Electricity Market via TransGrid's transmission lines at the northern end of the site. We are working with TransGrid to finalise the engineering and design of the grid connection works.
- **Amendments to the design and engineering:**  
These must reflect the final approved layout and the approval conditions.
- **Construction subcontracting arrangements:**  
RATCH will own the wind farm for its proposed 25-year life, and will retain management responsibility

and control, but we are not a construction company. Tenders will be called for the construction work.

- **Power Purchase Agreement ('PPA'):**  
We will be an energy wholesaler and need to strike an agreement with an energy retailer to purchase our energy and Renewable Energy Certificates. This is the normal way for power stations to sell their output.
- **Community engagement:**  
We will continue to keep the community informed through updates, newsletters and regular Community Forum meetings. We will formalise and establish our Community Enhancement Fund, and we will seek local community involvement in this process.



## We are upgrading our website

We are currently completing a major upgrade of our website, and will continue to make improvements to this over the coming months. All the Collector Wind Farm project information can be found at: [www.ratchaustralia.com/collector](http://www.ratchaustralia.com/collector)

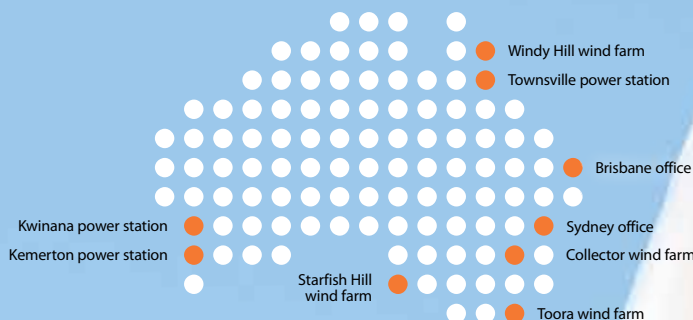
This website contains:

- Information relating to the project, including updated photo montages showing the final approved layout
- Links so you can download all of the Department's and PAC's assessment and approval documents
- All of the planning and approval documents and environmental studies prepared in the course of the DA application process
- Information about our Collector Wind Farm Community Forum
- Links to all of our community newsletters
- A form where you can register your details so that we can send you e-mail updates whenever we add new information to our website, produce a newsletter, provide other communication, or host a community information event.

# clean energy now.

## About RATCH-Australia

RATCH-Australia is an independent power producer with offices in Sydney and Brisbane. We operate three gas power stations in Australia, as well as three wind farms: Windy Hill in north Queensland, Toora in Victoria and Starfish Hill in South Australia. The Collector wind farm project is one of a number of wind and solar projects under development.



## For more information

Please contact:

**Anthony Yeates**

Project Director

T: 02 8913 9407

E: [anthony.yeates@ratchaustralia.com](mailto:anthony.yeates@ratchaustralia.com)

**Geoff Dutton**

Executive General Manager

Business Development

T: 02 8913 9410

E: [geoff.dutton@ratchaustralia.com](mailto:geoff.dutton@ratchaustralia.com)

[www.windfarms.net.au](http://www.windfarms.net.au)

[www.ratchaustralia.com](http://www.ratchaustralia.com)



**RATCH-Australia Corporation**